

**SprintMVP™ 624**

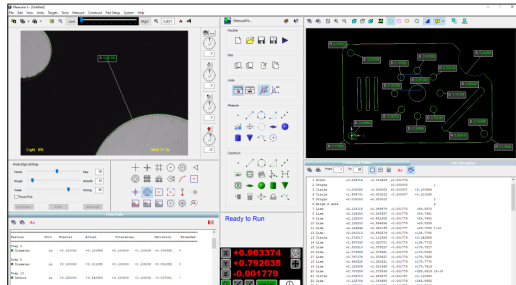
**SprintMVP 624** features a moving bridge design where the part remains stationary. The design also allows all measurement sensors to be moved out of the way for part loading/unloading. The 624 also includes:

- Motorized 6.5:1 zoom optical system and a digital megapixel color camera.
- 3-axis joystick allows for CNC motion control.
- All LED coaxial, substage profile, and ring light illumination is standard.

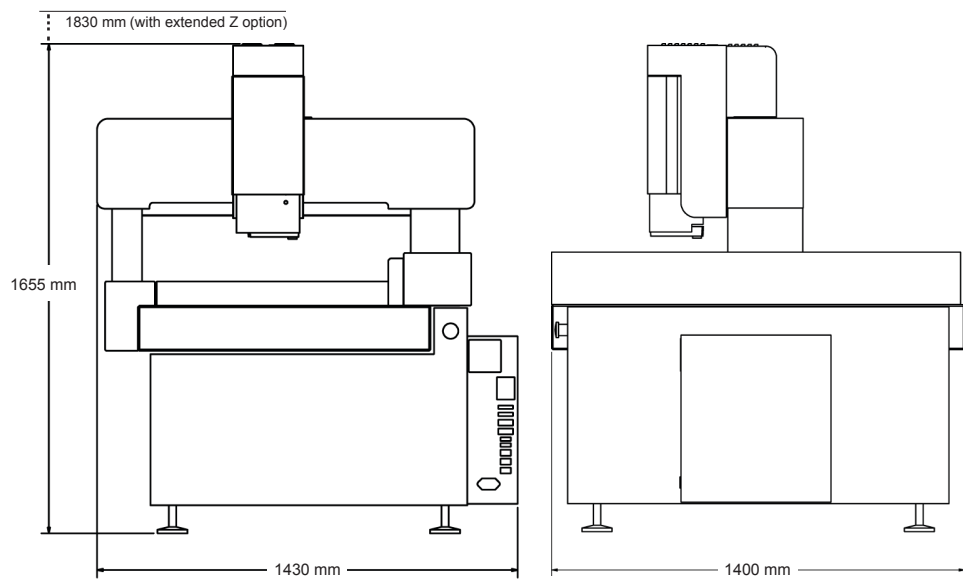
## Large Capacity, Fully Automatic, 3-Axis Dimensional Video Measurement System



Top image: VectorLight™ SP shown.



Full feature Measure-X® software offers 2D CAD program generation and general-purpose dimensional measurement with multi-sensor and rotary axis support.



System Weight: 1,100 kg  
Shipping Weight: 1,380 kg

	Standard		Optional	
<b>XYZ Travel</b>	624 x 624 x 200 mm		Extended Z axis, 300 mm	
<b>XYZ Scale Resolution</b>	0.5 µm			
<b>Drive System</b>	DC servo with 4-axis control (X, Y, Z, zoom); with 3-axis joystick controller			
<b>Worktable</b>	Anodized, with fixture holes, removable stage glass, 100 kg recommended max payload			
<b>Rotary Axis</b>			Miniature Servo Rotary (MSR™)	
<b>Optics</b>	Motorized zoom; 1.0x lens		<b>Lens Attachments for 1.0x Lens:</b> 0.5x, 0.75x, 1.5x, 2.0x	
<b>Illumination</b>	LED VectorLight SP programmable ring light with 6 rings and 7 sectors, LED backlight, LED square-on surface light		LED VectorLight SF programmable ring light with 6 rings and 8 sectors and LED square-on surface light (reduced working clearance)	
<b>Metrology Camera</b>	Digital, Megapixel Color Metrology Camera			
<b>Field of View (mm)</b> <small>*Uses optical and digital zoom</small>	Low Mag	High Mag*	Low Mag (0.5x)	High Mag* (2.0x)
	7.3 mm x 5.5 mm	0.5 mm x 0.4 mm	14.6 mm x 11.0 mm	0.27 mm x 0.20 mm
<b>Magnification on 24" LCD Monitor</b>	24x to 370x on-screen digital/optical magnification standard with full feature Measure-X layout		12x to 740x on-screen digital/optical magnification with optional add-on lenses and dual monitor user interface	
<b>Working Distance</b>	62 mm (with standard VectorLight)		Up to 133 mm (0.5x lens attachment)	
<b>Sensor Options</b>			<b>Tactile:</b> TP20 or TP200 Touch Probe <b>Non-Contact:</b> DRS Laser	
<b>Software</b>	Measure-X metrology software		<b>Productivity software:</b> MeasureFit® Plus, OGP® EVOLVE® SmartProfile®, EVOLVE SPC <b>Offline software:</b> Measure-X	
<b>System Controller</b>	Windows based, with up-to-date processor and onboard networking/communication ports			
<b>Controller Options</b>			24" flat panel LCD monitor, or dual 24" flat panel LCD monitors, keyboard, 3-button mouse (or user supplied)	
<b>Power Requirements</b>	100-120 VAC or 200-240 VAC, 50/60 Hz, 1 phase, 750W			
<b>Safe Operating Environment</b>	Temperature 15-30 °C, non-condensing			
<b>Rated Environment</b>	Temperature 18-22 °C, stable to ± 1 °C, max rate of change 1 °C / hour, max vertical gradient of 1 °C / meter; 30-80% humidity; vibration <0.001g below 15 Hz			
<b>XY Area Accuracy</b>	$E_z = (3.0 + 8L/1000) \mu\text{m}$		$E_z = (5.0 + 8L/1000) \mu\text{m}$ (with optional extended Z)	
<b>Z Linear Accuracy</b>	$E_x = (5.0 + 8L/1000) \mu\text{m}$		$E_x = (4.0 + 8L/1000) \mu\text{m}$ (requires optional 2.0x lens attachment)	

Accuracy is evaluated with a QVI verification procedure where "L" is measured length in millimeters. Specifications apply within the rated environment. Standard optical specifications apply at the maximum optical magnification of the standard configuration. XY Accuracy applies with an evenly distributed load up to 10 kg in the standard measuring plane. The standard measuring plane is defined as a plane that is within 25 mm of the worktable surface. Depending on load distribution, accuracy at maximum payload may be less than standard.



Confidence. When Results Matter.™

**World Headquarters:** Rochester, NY, USA • 585.544.0400 • [www.ogpnet.com](http://www.ogpnet.com)  
**OGP Shanghai Co, Ltd:** Shanghai, China  
 86.21.5045.8383/8989 • [www.smartscope.com.cn](http://www.smartscope.com.cn)  
**OGP Messtechnik GmbH:** Hofheim-Wallau, Germany  
 49.6122.9968.0 • [www.ogpmesstechnik.de](http://www.ogpmesstechnik.de)  
**Optical Gaging (S) Pte Ltd:** Singapore • 65.6741.8880 • [www.smartscope.com.sg](http://www.smartscope.com.sg)