

SprintMVP™ 1500|1550|1552

SprintMVP 1500 series measurement systems offer non-contact measurement on a massive granite base making them ideal for measuring very large parts or groups of parts. Additional features include:

- Moving bridge design where the part remains stationary.
- Motorized 6.5:1 zoom optical system and a digital megapixel color camera.
- 3-axis joystick allows for CNC motion control. All LED coaxial, substage profile, and ring light illumination is standard.

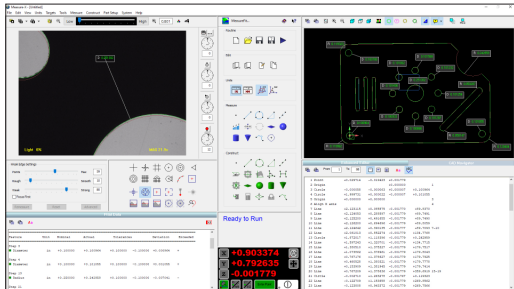
Extra-Large Capacity, Fully Automatic, 3-Axis Dimensional Video Measurement System



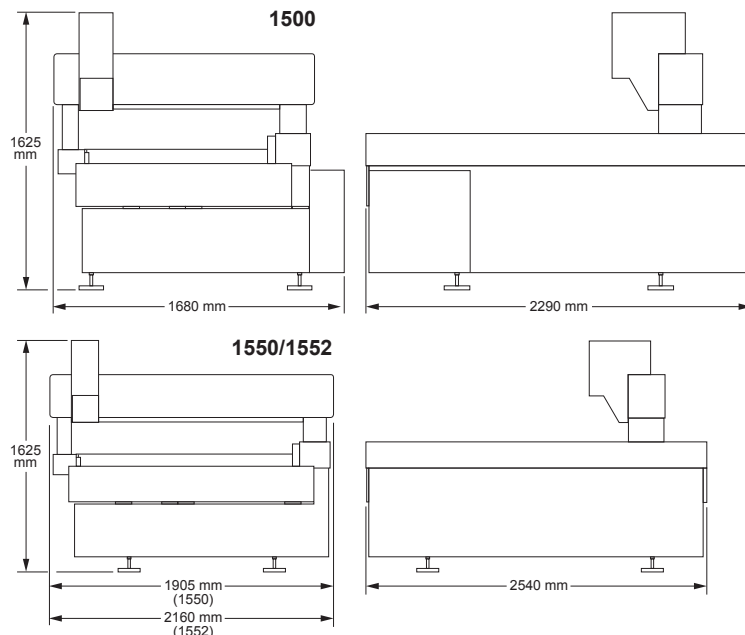
Top image: Optional DRS™ Laser shown.



SprintMVP™ 1500|1550|1552



Full feature Measure-X® software offers 2D CAD program generation and general-purpose dimensional measurement with multi-sensor and rotary axis support.



System Weight: 1500 Model: 2,590 kg 1550 Model: 5,460 kg 1552 Model: 6,380 kg
 Shipping Weight: 1500 Model: 3,000 kg 1550 Model: 6,260 kg 1552 Model: 7,280 kg

	Standard		Optional	
XYZ Travel	1500: 900 x 1500 x 200 mm 1550: 1250 x 1500 x 200 mm 1552: 1500 x 1500 x 200 mm			
XYZ Scale Resolution	0.5 µm			
Drive System	DC servo with 4-axis control (X, Y, Z, zoom); with 3-axis joystick controller			
Worktable	Anodized, with fixture holes, removable stage glass, 100 kg recommended max payload			
Rotary Axis			Miniature Servo Rotary (MSR™)	
Optics	Motorized zoom; 1.0x lens		Lens Attachments for 1.0x Lens: 0.5x, 0.75x, 1.5x, 2.0x	
Illumination	LED VectorLight™ SP programmable ring light with 6 rings and 7 sectors, LED backlight, LED square-on surface light		LED VectorLight SF programmable ring light with 6 rings and 8 sectors and LED square-on surface light (reduced working clearance)	
Metrology Camera	Digital Megapixel Color Metrology Camera			
Field of View <small>*Uses optical and digital zoom</small>	Low Mag	High Mag*	Low Mag (0.5x)	High Mag* (2.0x)
	7.3 mm x 5.5 mm	0.5 mm x 0.4 mm	14.6 mm x 11.0 mm	0.27 mm x 0.20 mm
Magnification on 24" LCD Monitor	24x to 370x on-screen digital/optical magnification standard with full feature Measure-X layout		12x to 740x on-screen digital/optical magnification with optional add-on lenses and dual monitor user interface	
Working Distance	62 mm (with standard VectorLight)		Up to 133 mm (0.5x lens attachment)	
Sensor Options			Tactile: TP20 or TP200 Touch Probe Non-Contact: DRS Laser	
Software	Measure-X metrology software		Productivity software: MeasureFit® Plus, OGP® EVOLVE® SmartProfile®, EVOLVE SPC Offline software: Measure-X	
System Controller	Windows based, with up-to-date processor and onboard networking/communication ports			
Controller Options			24" flat panel LCD monitor, or dual 24" flat panel LCD monitors, keyboard, 3-button mouse (or user supplied)	
Power Requirements	100-120 VAC or 200-240 VAC, 50/60 Hz, 1 phase, 750W			
Safe Operating Environment	Temperature 15-30 °C, non-condensing			
Rated Environment	Temperature 18-22 °C, stable to ± 1 °C, max rate of change 1 °C / hour, max vertical gradient of 1 °C / meter; 30-80% humidity; vibration <0.001g below 15 Hz			
XY Area Accuracy	SprintMVP 1500: $E_z = (5.0 + 6L/1000) \mu\text{m}$ SprintMVP 1550: $E_z = (5.5 + 6L/1000) \mu\text{m}$ SprintMVP 1552: $E_z = (8.5 + 6L/1000) \mu\text{m}$			
Z Linear Accuracy	$E_z = (5.0 + 8L/1000) \mu\text{m}$		$E_z = (4.0 + 8L/1000) \mu\text{m}$ (requires optional 2.0x lens attachment)	

Accuracy is evaluated with a QVI verification procedure where "L" is measured length in millimeters. Specifications apply within the rated environment. Standard optical specifications apply at the maximum optical magnification of the standard configuration. XY Accuracy applies with an evenly distributed load up to 10 kg in the standard measuring plane. The standard measuring plane is defined as a plane that is within 25 mm of the worktable surface. Depending on load distribution, accuracy at maximum payload may be less than standard.



Confidence. When Results Matter.™

World Headquarters: Rochester, NY, USA • 585.544.0400 • www.ogpnet.com

OGP Shanghai Co, Ltd: Shanghai, China
86.21.5045.8383/8989 • www.smartscope.com.cn

OGP Messtechnik GmbH: Hofheim-Wallau, Germany
49.6122.9968.0 • www.ogpmesstechnik.de

Optical Gaging (S) Pte Ltd: Singapore • 65.6741.8880 • www.smartscope.com.sg