

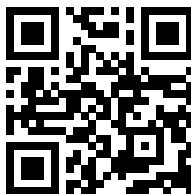


## SmartScope® CNC 1500|1550|1552

**SmartScope CNC 1500|1550|1552** – CNC 1500 series multisensor systems feature a large XY travel with a massive granite base and moving bridge design where the part remains stationary. Measurement range accommodates large parts such as LCDs, displays, circuit boards, and multi-component fixtures. CNC 1500 series offers:

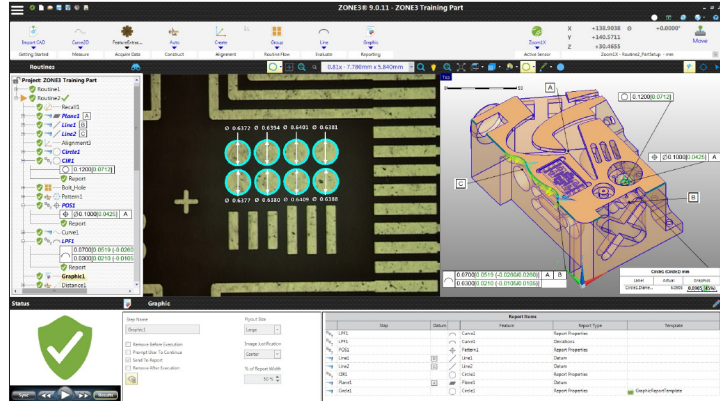
- **Precision Optics** – High quality AccuCentric® zoom lens automatically compensates magnification for each zoom position.
- **Flexible Illumination** – Standard profile light, coaxial surface light, and SmartRing™ light illuminate parts from all angles.
- **Multisensor Versatility** – Optional touch probe, laser, Rainbow Probe™, and rotary indexers.

### Extra-Large XY-Travel Multisensor Dimensional Measuring System

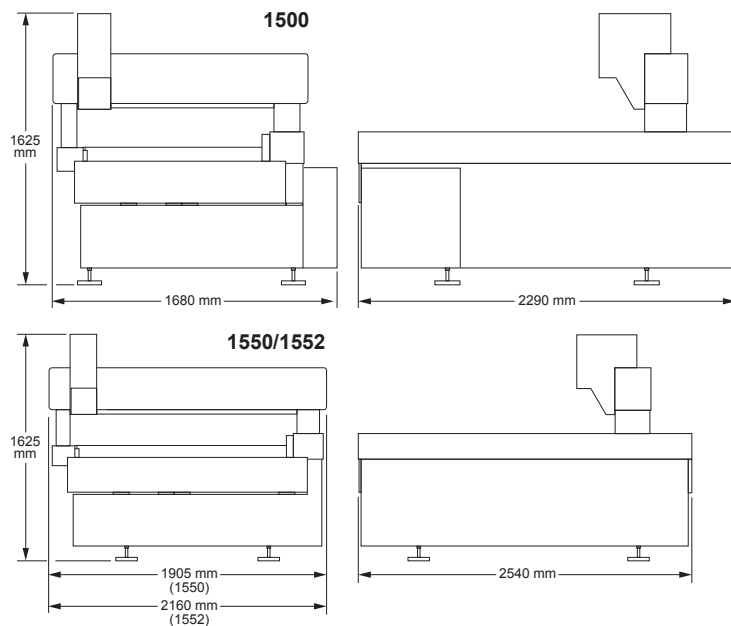


# SmartScope® CNC

## 1500 | 1550 | 1552



ZONE3® Metrology Software represents a totally new way of working with multisensor measurement systems, providing faster, easier, and more productive measurements.



**CNC 1500**  
System Weight: 2590 kg  
Shipping Weight: 3000 kg

**CNC 1550**  
System Weight: 5460 kg  
Shipping Weight: 6260 kg

**CNC 1552**  
System Weight: 6380 kg  
Shipping Weight: 7280 kg

	Standard	Optional
<b>XYZ Travel</b>	1500: 900 x 1500 x 200 mm 1550: 1250 x 1500 x 200 mm 1552: 1500 x 1500 x 200 mm	
<b>XYZ Scale Resolution</b>	0.1 µm, including dual Y-axis scales	
<b>Drive System</b>	DC servo with 4-axis control (X, Y, Z, zoom); with multifunction handheld controller	
<b>Worktable</b>	Anodized, with fixture holes, removable stage glass, 100 kg recommended max payload	
<b>Rotary Axis</b>		Miniature Servo Rotary (MSR™), MicroTheta Rotary (MTR™)
<b>Optics*</b>	AccuCentric® auto-compensating zoom, motorized; 1.0x lens	<b>Focus Grid Projector:</b> LED Source <b>Laser Adapter:</b> Allows for field retrofit of TTL Laser. Includes Laser Pointer <b>Replacement Lenses:</b> 2.5x, 5.0x <b>Laser Lenses:</b> 2.0x (Included with TTL Laser), 5.0x <b>Lens Attachments for 1.0x Lens:</b> 0.5x, 0.75x, 1.5x, 2.0x
<b>Illumination</b>	Substage LED profile, coaxial LED surface, SmartRing LED ring light (white)	Red, Green, or Blue SmartRing; Flexible SmartRing for 0.5x lens attachment
<b>Metrology Camera</b>	Color metrology camera	Monochrome metrology camera
<b>Field of View**</b>	8.0 mm x 6.0 mm (low zoom) to 0.90 mm x 0.68 mm (high zoom)	14.6 mm x 10.9 mm (1.0x lens, 0.5x attachment) to 0.19mm x 0.14 mm (5.0x lens)
<b>Working Distance</b>	64 mm	Up to 97 mm (1.0x lens, 0.5x attachment)
<b>Sensor Options***</b>		<b>Tactile:</b> TP20 or TP200 Touch Probe <b>Non-Contact:</b> Through-the-Lens (TTL) Laser, DRS™ Laser, Rainbow Probe
<b>Software</b>	<ul style="list-style-type: none"> <li>• ZONE3 Express or Measure-X metrology software</li> <li>• QVI® Portal</li> </ul>	<b>Metrology software:</b> ZONE3 Prime, ZONE3 Pro <b>Productivity software:</b> Measure-X® Analyze, SmartFit® 3D, EVOLVE® Suite (Design, EVOLVE SPC, Manufacturing, SmartProfile®) <b>Offline software:</b> ZONE3, Measure-X
<b>System Controller</b>	Windows® based, with up-to-date processor and onboard networking/communication ports	
<b>Controller Options</b>		24" flat panel, or dual 24" flat panel LCD monitors; keyboard, 3-button mouse (or user supplied)
<b>Power Requirements</b>	100-120 VAC or 200-240 VAC, 50/60 Hz, 1 phase, 700 W	
<b>Safe Operating Environment</b>	15-30 °C, non-condensing	
<b>Rated Environment</b>	Temperature 18-22 °C, stable to ± 1 °C, max rate of change 1 °C / hour, max vertical gradient of 1 °C / meter; 30-80% humidity; vibration <0.001g below 15 Hz	
<b>XY Area Accuracy</b>	<b>CNC 1500 1550:</b> $E_z = (5.0 + 6L/1000) \mu\text{m}$ <b>CNC 1552:</b> $E_z = (8.0 + 6L/1000) \mu\text{m}$	
<b>Z Linear Accuracy</b>	$E_z = (3.0 + 8L/1000) \mu\text{m}$	

Accuracy is evaluated with a QVI verification procedure where "L" is measured length in millimeters. Specifications apply within the rated environment. Standard optical specifications apply at the maximum optical magnification of the standard configuration. XY Accuracy applies with an evenly distributed load up to 10 kg in the standard measuring plane. The standard measuring plane is defined as a plane that is within 25 mm of the worktable surface. Depending on load distribution, accuracy at maximum payload may be less than standard. This equipment complies with EMC directive EN IEC 61326-1, Class A.

\*Lenses and lens attachments can be manually interchanged to change magnification and working distance. \*\*FOV sizes with optional monochrome camera are 15% smaller in Measure-X. \*\*\*Rainbow Probe only supported in ZONE3.



Confidence. When Results Matter.™

World Headquarters: Rochester, NY, USA • 585.544.0400 • www.ogpnet.com

OGP Shanghai Co, Ltd: Shanghai, China  
86.21.5045.8383/8989 • www.smartscope.com.cn

OGP Messtechnik GmbH: Hofheim-Wallau, Germany  
49.6122.9968.0 • www.ogpmesstechnik.de

Optical Gaging (S) Pte Ltd: Singapore • 65.6741.8880 • www.smartscope.com.sg